

ROP

(m/hr)

500 50 5 .5

DEPTH (m)

1950
1960
1970
1980
1990
2000
2010
2020
2030
2040
2050
2060

LITHOLOGY %

TOTAL GAS & CHROMATOGRAPH DATA

TG ——— C1 ——— C2 - - - - - C3 ———
 iC4 - - - nC4 ——— iC5 - - - - - nC5 - - - - -
 Total Gas in Units
 Chromatograph in Percentage

.5 5 50 500 5K
 .01 .1 1 10 100

GAS RATIO BMA A1A

Scale 1:500

CHARACTER

WETNESS ———
 BALANCE - - - - -

0 1 2 1 10 100

PREVIOUS WELL HISTORY
 Plugged & Abandoned in
 October, 2005.
 13-3/8" Surface Csg 894.0m KB
 9-5/8" Intermediate Csg 2338.0m KB
 5-1/2" Production Liner 3074.0m KB

Top of Bridge Plug (EZSV):
 1503.3m MDRT
 9-5/8" Whipstock at 1502.2m MDRT
 8-1/2" Mill from 1495.6m MDRT
 to 1509.0m MDRT. Rat hole:7.2m

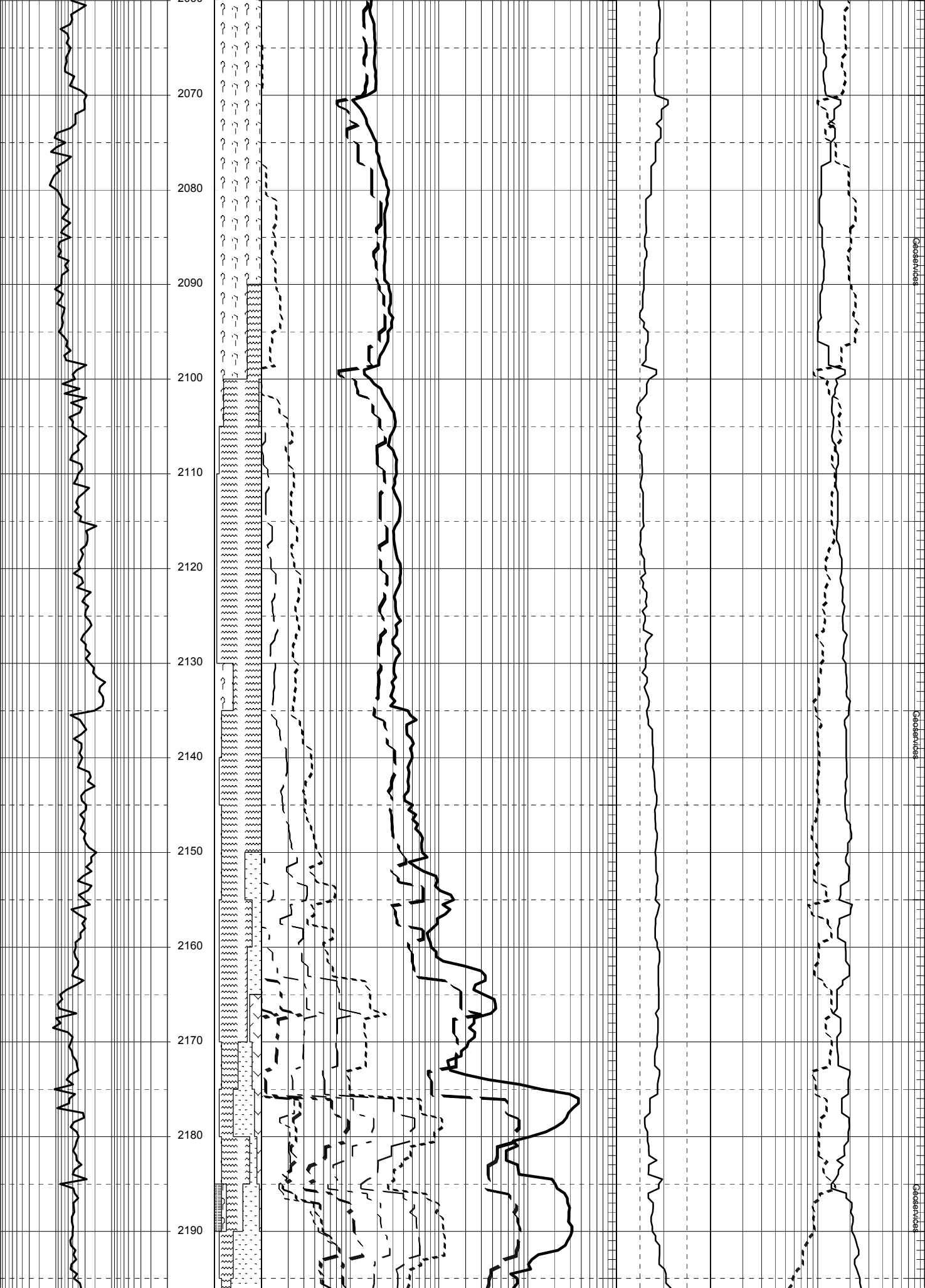
Window Depth 1495.6 to 1501.8m MDRT
 Start Milling Window at 03:45 hours
 on 01-11-2005

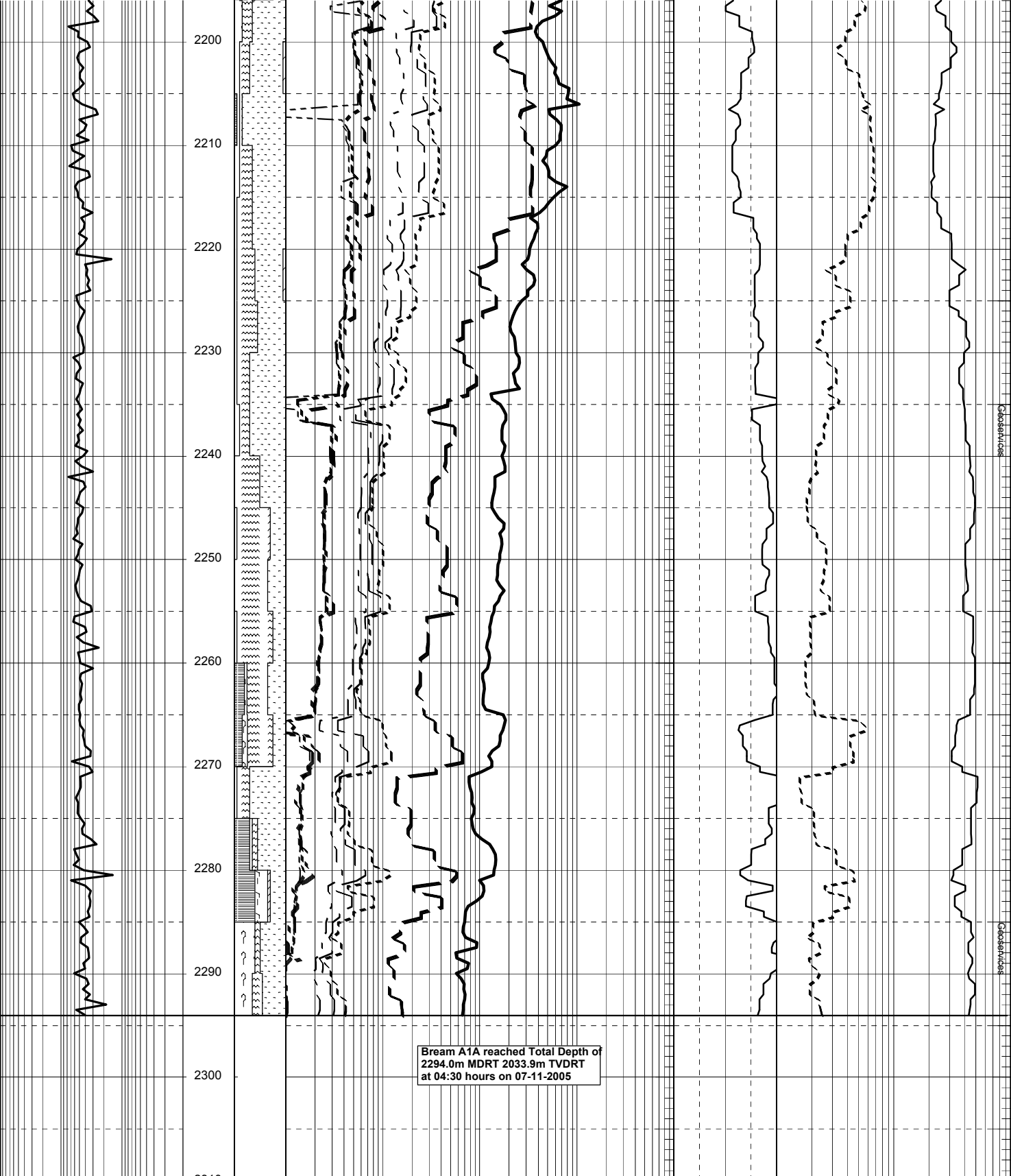
**Drilled from 1509.0m MDRT to
 1523.0m MDRT without kick-off.**
 Plug back to 1498.5m MDRT. Drill
 out to 1500.0m MDRT. Obstruction at
 1500.0m MDRT. No Go. Mill from
 1500.0m MDRT to 1505.0m MDRT

**Bream A1A kick-off at 21:40 hours
 on 04-11-2005 from 1505.0m MDRT**

BIT #3 8 1/2"
 Smith S73PX
 Jets: 6x20
 In : 1505.0m MDRT
 Out :
 Run :
 Hrs :
 Cond:

sepi/tesco





Bream A1A reached Total Depth of
2294.0m MDRT 2033.9m TVDRT
at 04:30 hours on 07-11-2005